



ENGEL JACOBS  
LONDON+HERTS



- 2 Bedrooms
- Large Reception/Diner
- 24 hour Concierge
- 2 Bathrooms
- Balcony Overlooking the Dock
- Gym



**South Quay Square**  
London

**Monthly Rental Of**  
**£2,300**

**Entrance Hall**

Wood flooring throughout, video entry phone, spotlights, storage cupboard.

**Bedroom 1** 14' 6" x 9' 7" (4.42m x 2.92m)

Carpeted throughout, fully fitted wardrobes, dressing table, spotlights, double glazed window to rear aspect.

**En-suite** 6' 9" x 6' 2" (2.06m x 1.88m)

Tiled floor throughout, partly tiled walls, low level WC, wash basin with mixer tap, shower cubicle, heated towel rail.

**Bedroom 2** 10' 7" x 8' 3" (3.22m x 2.51m)

Carpeted throughout, wardrobes, double glazed window to side aspect with dock views, spotlights.

**Bathroom** 8' 3" x 8' 1" (2.51m x 2.46m)

Tiled floor throughout, partly tiled walls, low level WC, wash basin with mixer tap, bath with overhead shower, storage cupboards, spotlights.

**Reception/Diner**

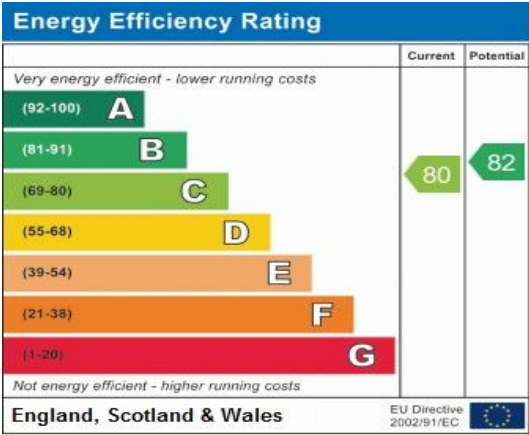
Wood flooring throughout, double glazed windows to side and front aspects, double glazed doors to balcony dock side.

**Kitchen** 7' 11" x 7' 11" (2.41m x 2.41m)

Tiled floor, fully fitted units both wall mounted and base, integrated Curry's fridge/freezer, Siemens induction hob, Siemens double oven, integrated Electrolux slimline dishwasher, Hotpoint washer/dryer, spotlights.

**Balcony**

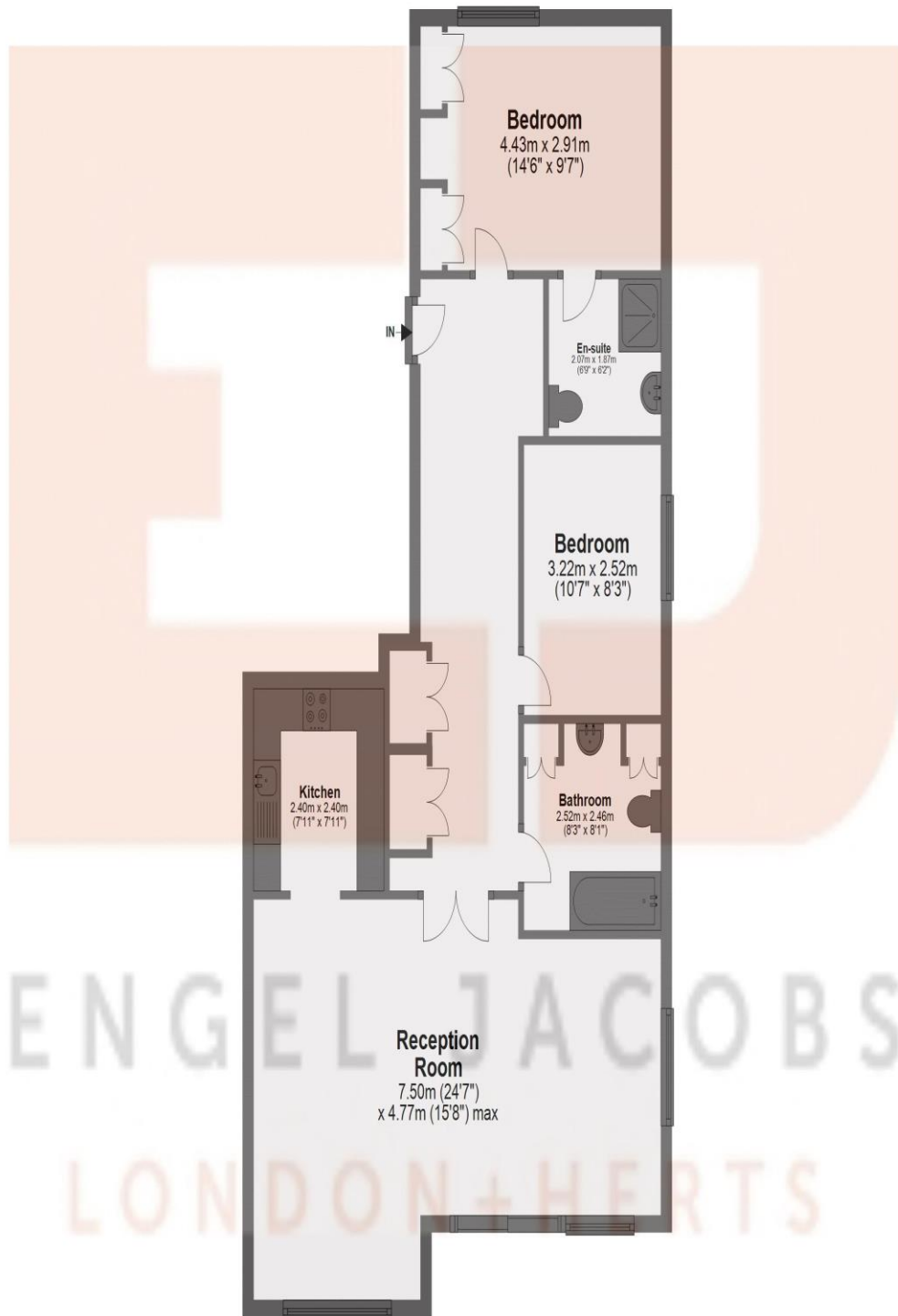
Decked area with table and chairs overlooking the dock.



Address:  
Flat 56, Discovery Dock Apartments

## Sixth Floor

Approx. 87.7 sq. metres (944.5 sq. feet)



Total area: approx. 87.7 sq. metres (944.5 sq. feet)

MONEY LAUNDERING REGULATIONS 2003

intending purchasers will be asked to produce identification and proof of financial status when an offer is received. We would ask for your co-operation in order that there will be no delay in agreeing the sale.